

This document provides details on configuring BIRT Report Designer 232 for the Base Services 7.1.1.5 and future Releases. The steps include

1. Download the BIRT Designer 232 (pages 2)
2. Install V7 Design Files for BIRT 232 (pages 3 - 5)
3. Access BIRT Designer 232 (pages 6 - 9)
4. Configure BIRT Designer 232 with V7 Configuration files (pages 10 - 16)
5. Common Install/Configuration Issues

Note:

Prior to this 7.1.1.5 release, BIRT 2.1.2 was used and supported within the V7 Releases. Information on the functional and upgrade differences between BIRT 212 and 232 can be found in the document titled 'Upgrading to BIRT 232 in V7'.

1. Download the BIRT Designer 232

Prerequisites:

Before beginning install, make sure a copy of IBM JDK 1.5 (5.0) has been installed locally.

Note:

1. Either JDK 1.5 or 1.6 can be used with BIRT Designer 232. However, JDK 1.5 is recommended as it corresponds to the current version supported by Maximo.

Download

1A. Download a copy of BIRT 2.3.2 all-in-one package, BirtDesigner232.zip, from IBM's OPAL Website per the URL below

<https://www-304.ibm.com/software/brandcatalog/ismlibrary/details?catalog.label=1TW100T07>

The screenshot shows the IBM OPAL website interface. At the top, there's a navigation bar with the IBM logo, a search bar, and links for Home, Solutions, Services, Products, Support & downloads, and My IBM. The main content area is titled "BIRT Report Designer V2.3.2". On the left, there's a sidebar with "Integrated Service Management Library" and various categories like "Find accelerators" and "Service management". The main content area displays product details: "Viewed: 5201 times", "Rating: ☆☆☆☆", "Referrals: 3882", "NavCode®: 1TW100T07", "Version: 2.3.2", "Last Updated: Oct 30, 2010", "Support Level: Not supported", and "Provider: IBM". Below this, there's a "Description" section stating: "This download includes BIRT all in one Report Designer for use with IBM Maximo and IBM Tivoli Process Automation Engine (TPAE) Base Services V7.1.1.5 and future Releases." On the right, there's a "Tivoli software" section with a "What do you want to do?" list including "E-mail us", "Write a review", "Bookmark favorite", "My favorites", "My ISM Library profile", and "Download". Below that is a "Solution contact" section with "Contact provider" and "View all solutions from IBM" links.

1B. Extract the zip file to a local directory which does not include any spaces (for example: `C:\birt_232`)

2. Install V7 Design Files for BIRT 232

Prerequisites:

To perform the next steps, you will need a local copy of V7.1.1.5 or higher, with the report source.

2A. Locate the compiled classes used for the V7 Report Scripting from your local copy of V7.1.1.5 or higher as shown below.

<V7115>\reports\birt\scriptlibrary\classes

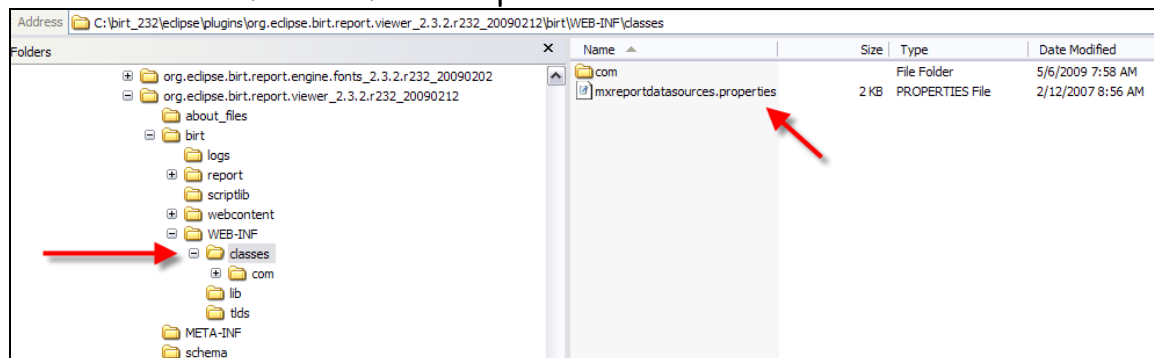
2B. Navigate to the EclipseBIRT location below

<birt_232>\eclipse\plugins\org.eclipse.birt.report.viewer_2.3.2.r232_20090212\birt\WEB-INF

1. Create a classes folder
2. Copy the entire V7 \com folder from step 2A to the new classes folder you just created

<birt_232>\eclipse\plugins\org.eclipse.birt.report.viewer_2.3.2.r232_20090212 \birt\WEB-INF\classes

2C. Copy and paste the mxreportdatasources.properties using the same source and destination folders from steps 2A and 2B.



2D. Open the copied mxreportdatasources.properties file, and edit it for your local configuration by:

- a) Setting the URL, driver, username, password, and schemaowner properties for your local environment.
- b) Change #<DataSourceName> to maximoDataSource.

This file is shown below, including a sample update for a DB2 Database:

```
#<DataSourceName>.<propertyName>=value

# driver for ORACLE
# oracle.jdbc.driver.OracleDriver
# sample url for ORACLE
# jdbc:oracle:thin:@<HOST>:<PORT>:<SID>
# sample schemaowner for ORACLE
# maximo

# driver for SQLServer
# com.inet.tds.TdsDriver
# sample url for SQLServer
# jdbc:inetdae7a:hostname:port?database=dbname&language=us_english&nowarnings=true
# sample schemaowner for SQLServer
# dbo

# driver for DB2
# com.ibm.db2.jcc.DB2Driver
# sample url for DB2
# jdbc:db2://localhost:50000/dbalias
# sample schemaowner for DB2
# maximo

maximoDataSource.url=jdbc:db2://HARRIERDB2:50000/HARRIER
maximoDataSource.driver=com.ibm.db2.jcc.DB2Driver
maximoDataSource.username=maximo
maximoDataSource.password=maximo
maximoDataSource.schemaowner=maximo
```

The values in **red** point to a sample local database. You can check yours and other available for you to choose from Start Menu\Programs\IBM DB2\Set-up Tools\Configuration Assistant.

The key name in **green** is the default set for all reports, you have to use exactly this text.

Notes:

1. The mxreportdatasources.properties file is only used by a report developer when he is creating reports within the BIRT Report Designer. When V7 Reports are executed from within the V7 Applications, their connection information will be passed dynamically from V7.
2. Clients may not want to grant each report developer full database access by using the system maximo database user privileges as the developer creates and test report designs. Instead, they want the developer to have restricted database access. This restriction usually requires that the report developer be granted 'read only' access to a limited number of database objects. To do this, a unique database user is required. Details in how to do this can be found in the 'V7 BIRT Report Developer Guide' available at IBM's support website.

2E. Copy the specific JDBC driver for your Database Type from
<V7115>\applications\maximo\lib

to:

eclipse\plugins\org.eclipse.birt.report.viewer_2.3.2.r232_20090212\birt\WEB-INF\lib

These drivers are only used by the designer.

Note:

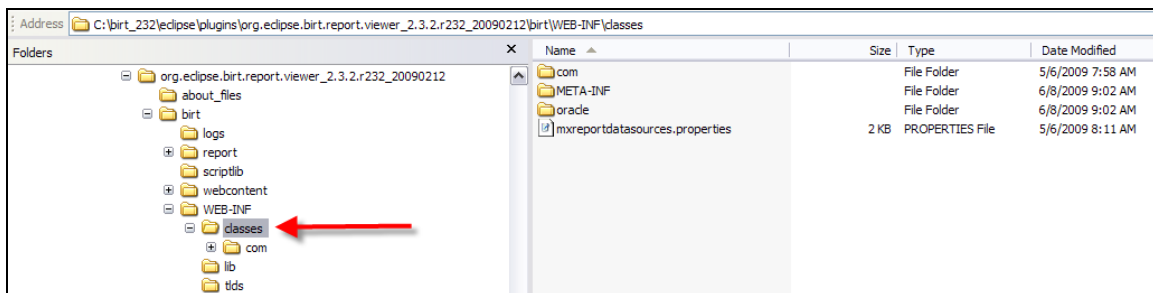
For Oracle, copy/paste oraclethin.jar

For SQL Server, copy/paste opta.jar

For DB2, copy/paste db2jcc.jar and db2jcc_license_cu.jar

2F. Open the Jar files from Step 2E above with WinZip for your specific database type and *extract the contents of the jar file to*

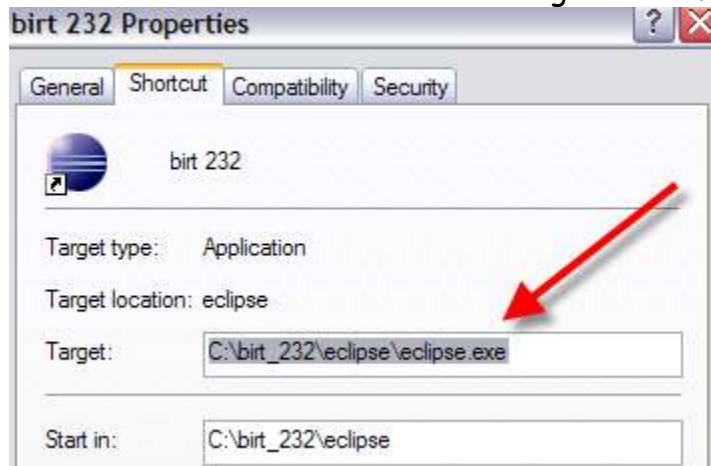
<eclipse>\plugins\org.eclipse.birt.report.viewer_2.3.2.r232_20090212\birt\WEB-INF\classes



Note: If you see an exception error like 'ClassNotFoundException' in BIRT Designer after following these steps, double check that you have extracted the jar files properly in step 2F. Not extracting the jar files will cause a 'ClassNotFoundException' Error.

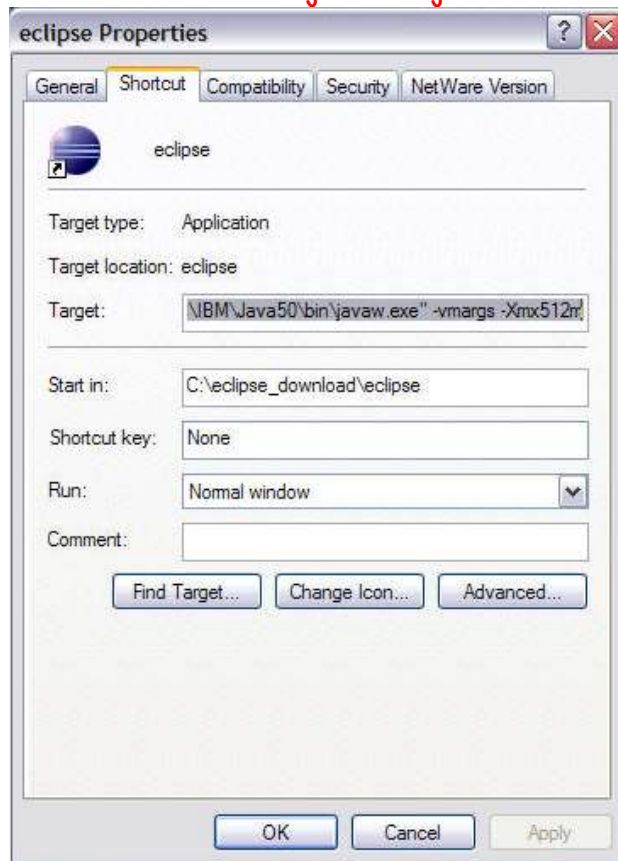
3. Accessing the BIRT Designer

3A. Create a shortcut to BIRT Designer 232 from eclipse.exe.

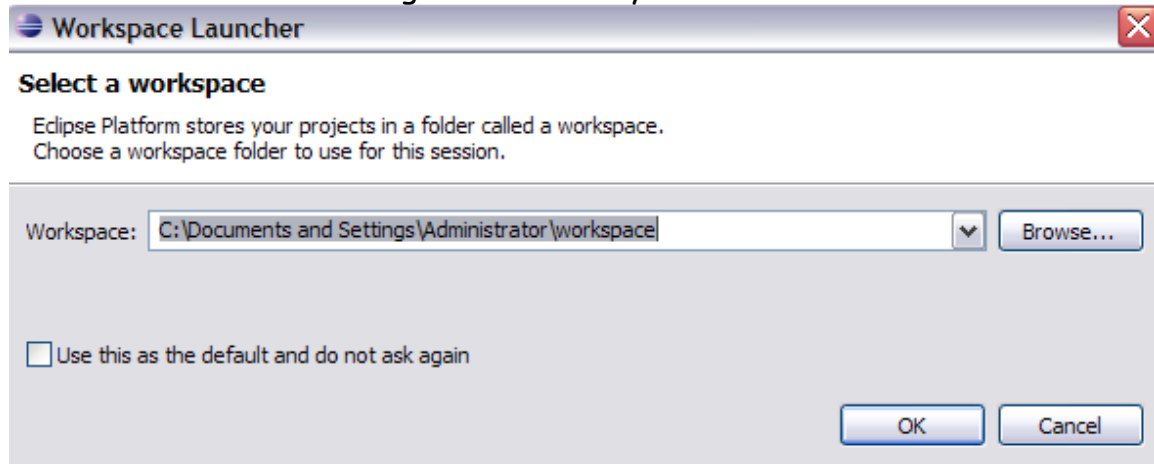


3B. Update the shortcut's target to include your JDK 1.5 install. This is done by modifying the path highlighted in red below.

`C:\eclipse_download\BIRT\eclipse\eclipse.exe -vm "C:\Program Files\IBM\Java50\jre\bin\java.exe" -vmargs -Xmx512m`



3C. Launch the BIRT Designer 232 from your new shortcut.

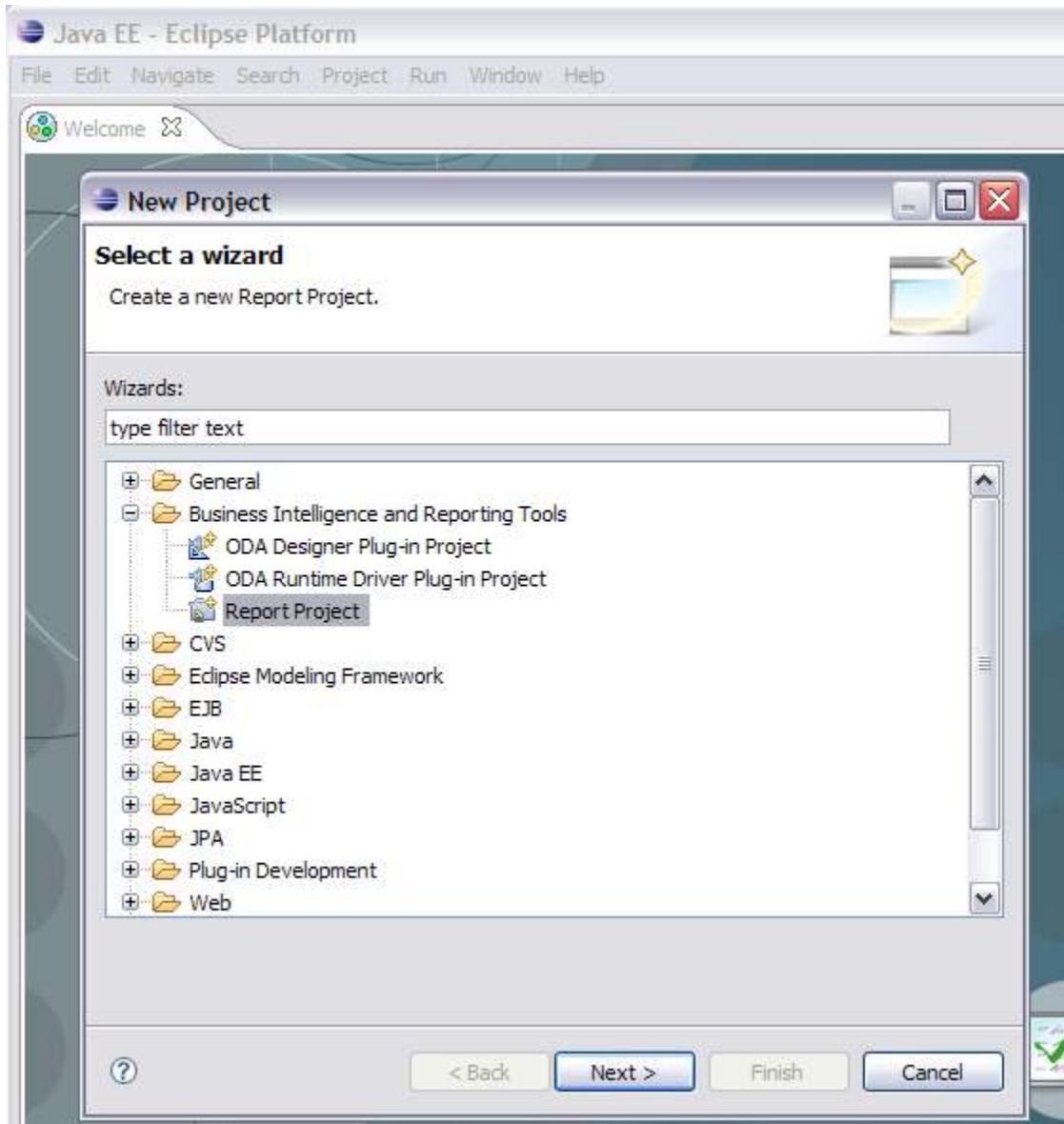


3D. Select an applicable workspace location for your environment. Check 'Use this as default' field and OK.

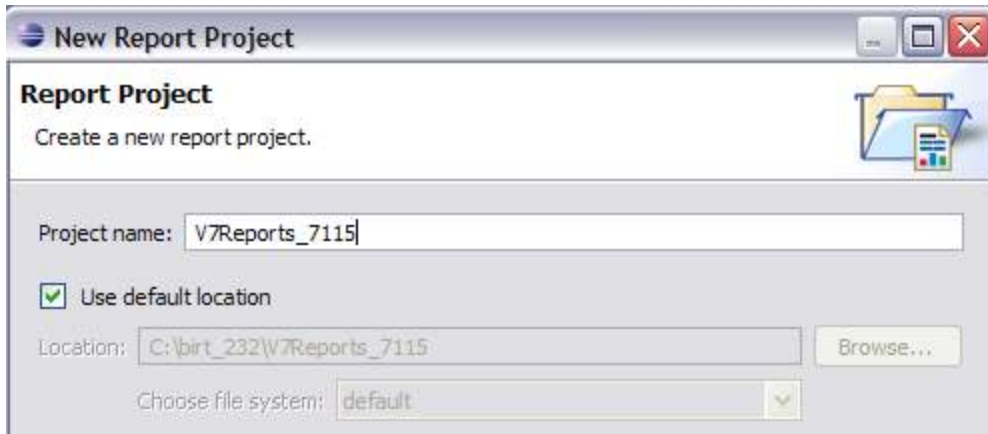
3E. Eclipse SDK Opens.



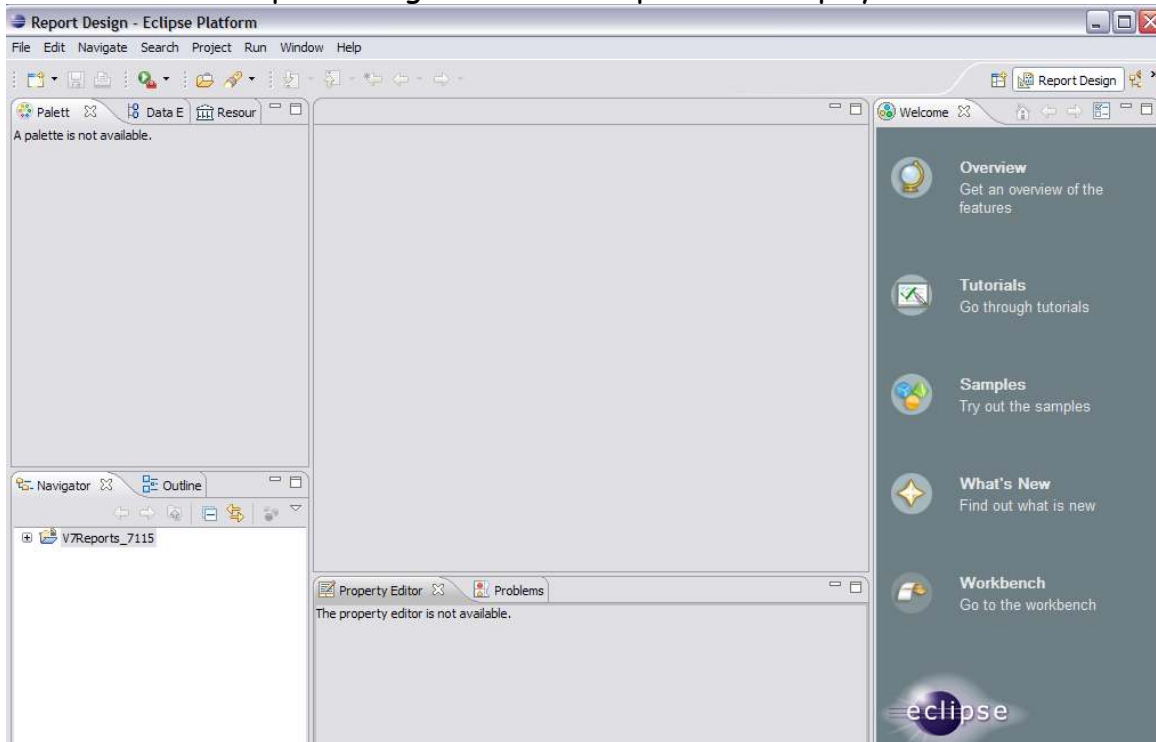
3F. From the menu, select File - New - Project. Scroll down to the Business Intelligence and Reporting Tools Location, and select Report Project. Click Next.



3G. Type in a project name and click Finish.



3H. The BIRT Report designer within Eclipse SDK Displays.

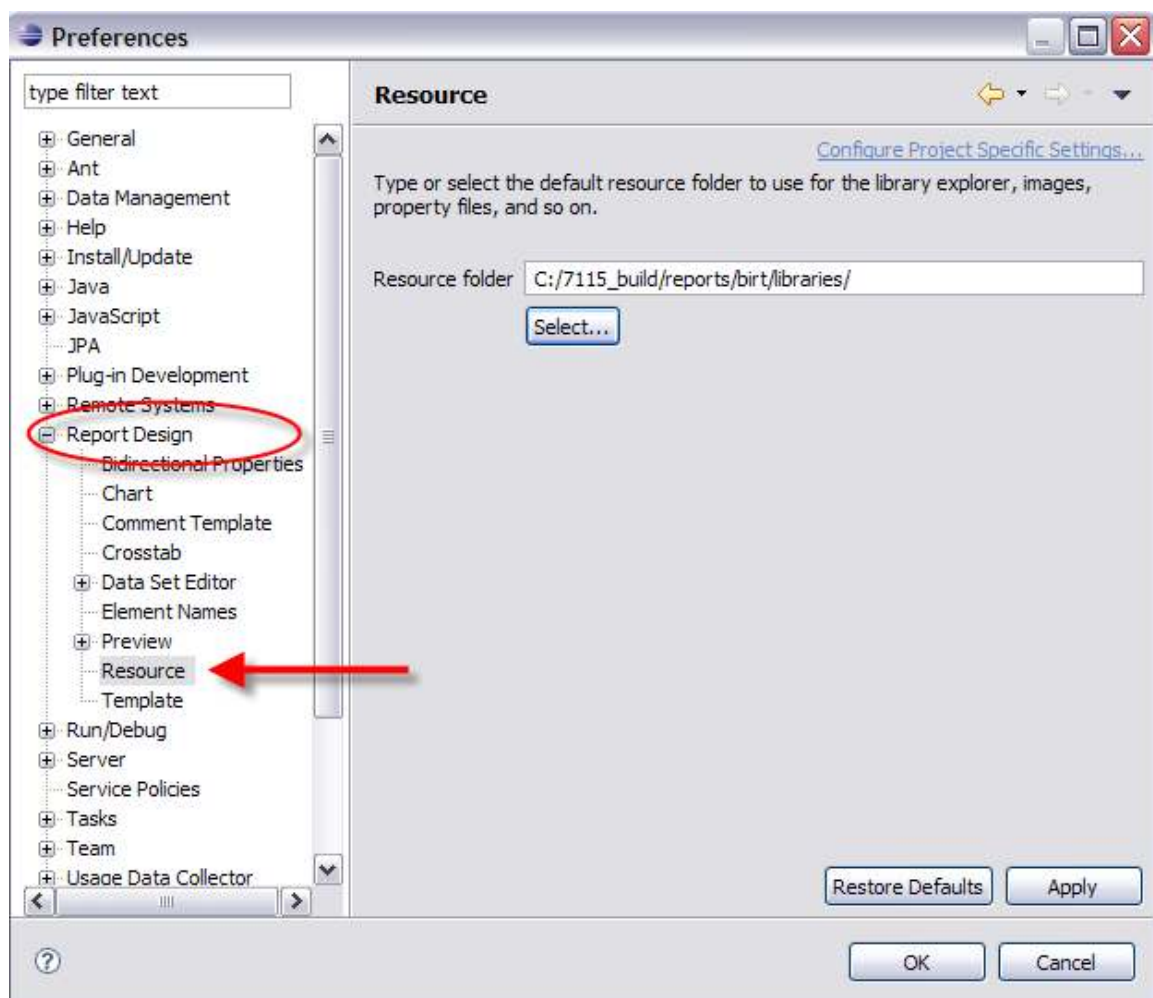


4. Configure BIRT Designer 232 with V7 Configuration

NOTE: Use forward slashes or the Select button when specifying the folder paths in Eclipse.

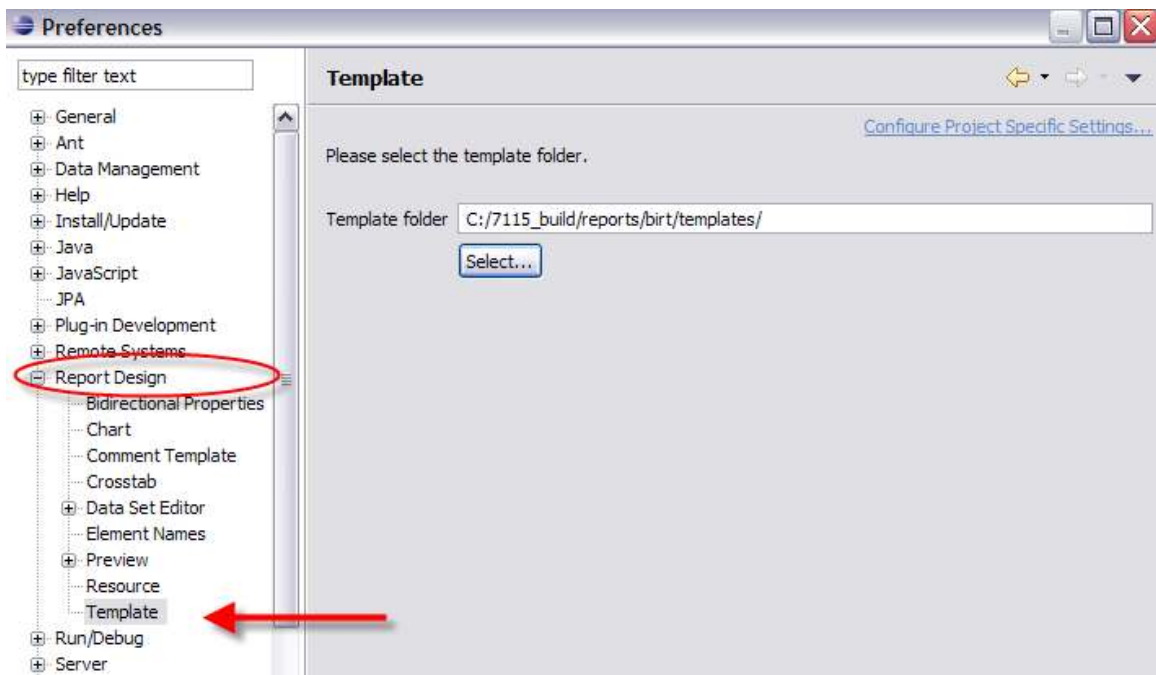
4A. Specify the resource folder location to import the V7 Libraries.

- A. From the Menu, select Window - Preferences.
- B. Expand Report Design and select Resource.
- C. Browse to your local report library location and select Apply.
 <V7115>/reports/birt/libraries



4B. Specify the templates folder location to import the V7 Templates.

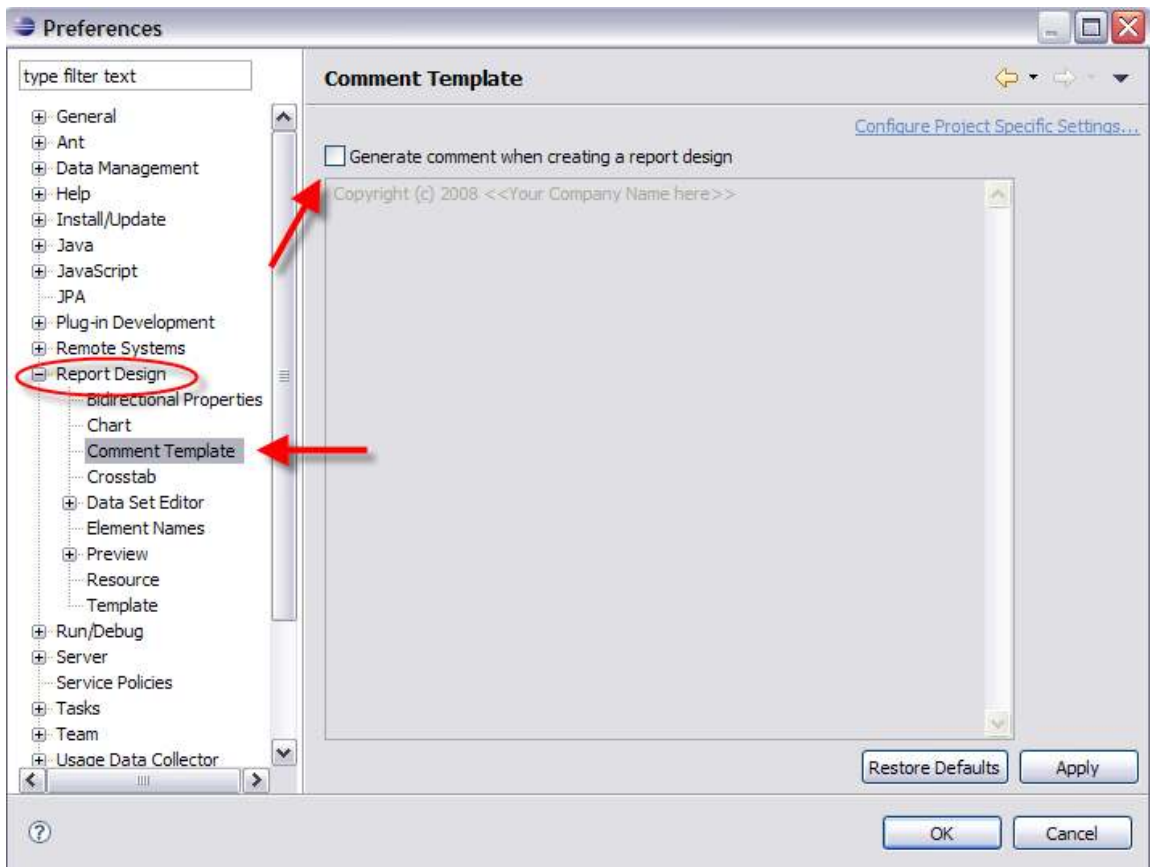
- A. If not already open, from the menu, Select Window - Preferences.
- B. Expand Report Design and select Templates.
- C. Browse to your local report template location and select Apply.
 <V7115>/reports/birt/templates



4C. Disable the Comment Template.

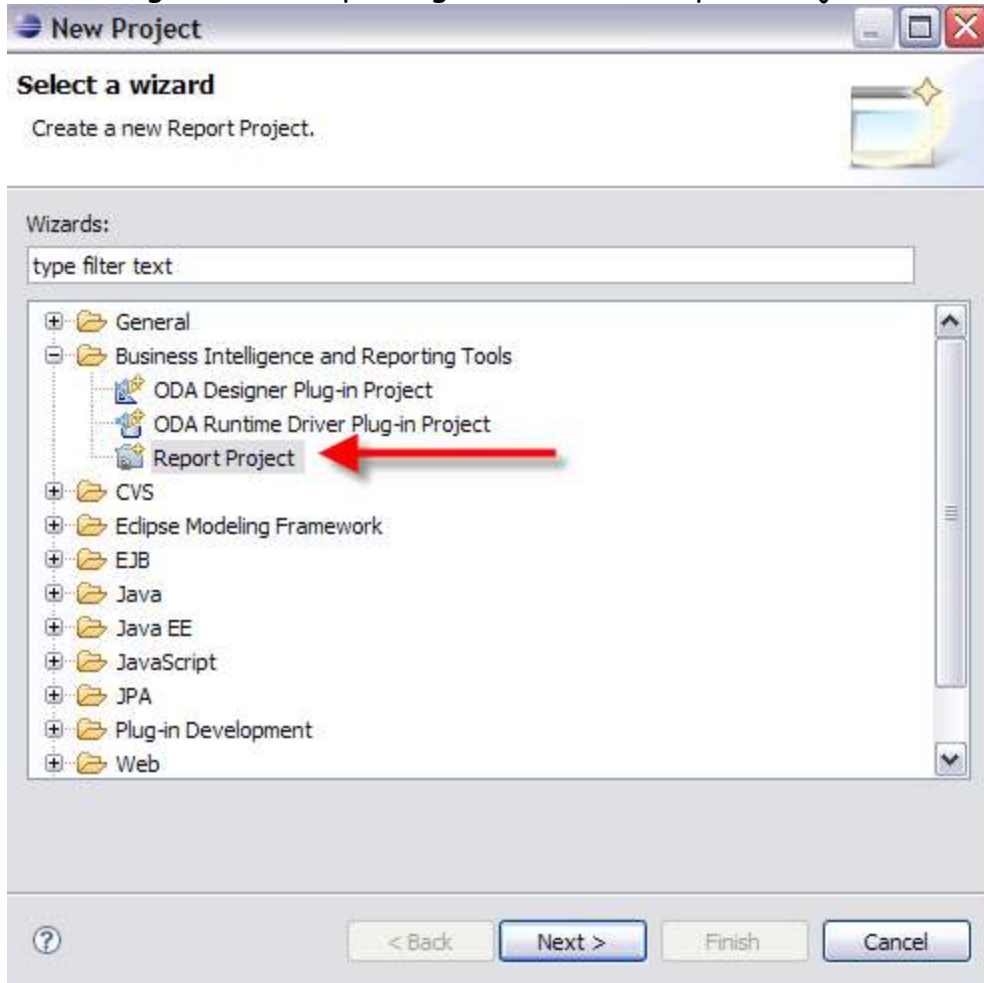
- A. If not already open, from the menu, Select Window - Preferences.
- B. Remove the flag from the 'Generate comment when creating a report design' field if it is set.

Note: The field is disabled by default



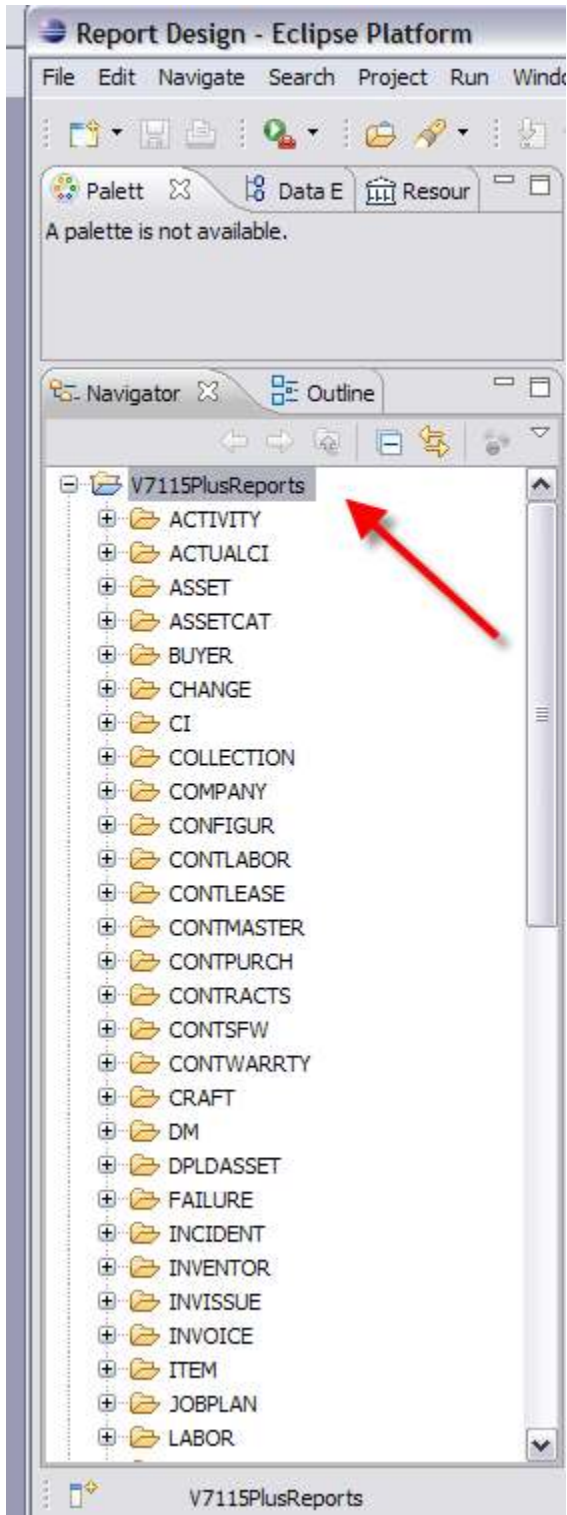
4D. Next, import the report project. This will bring the V7 Reports into your project workspace.

1. First, create a project. Click File, New Project. Under Business Intelligence and Reporting Tools, select Report Project. Click Next.

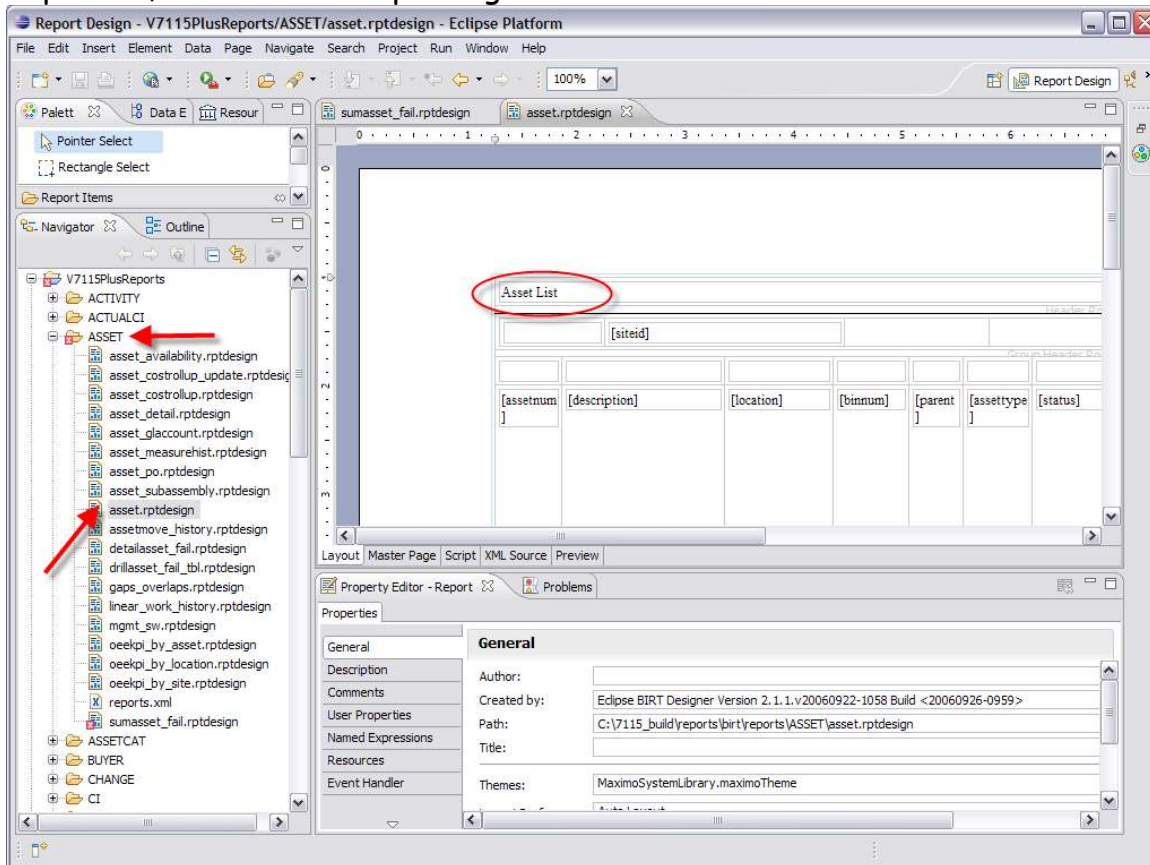


2. Enter a Project Name.
 - a. Remove the flag in the 'Use Default Location' field.
 - b. For the Location Field Value, browse to the location of your V7 Report Source. <V7115>\reports\birt\reports.
 - c. Click Finish.

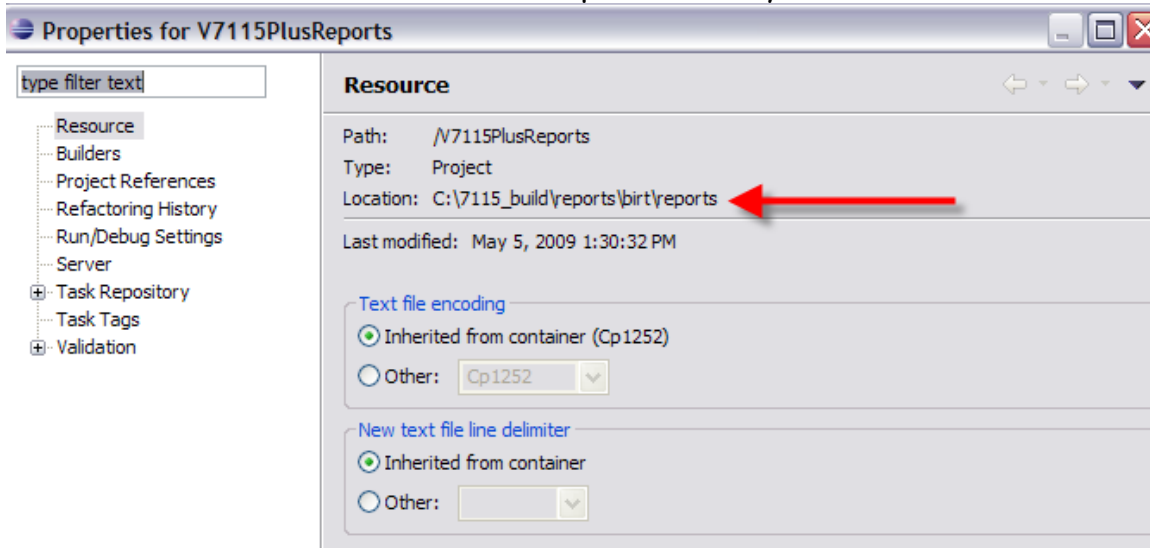
3. The report project is imported.



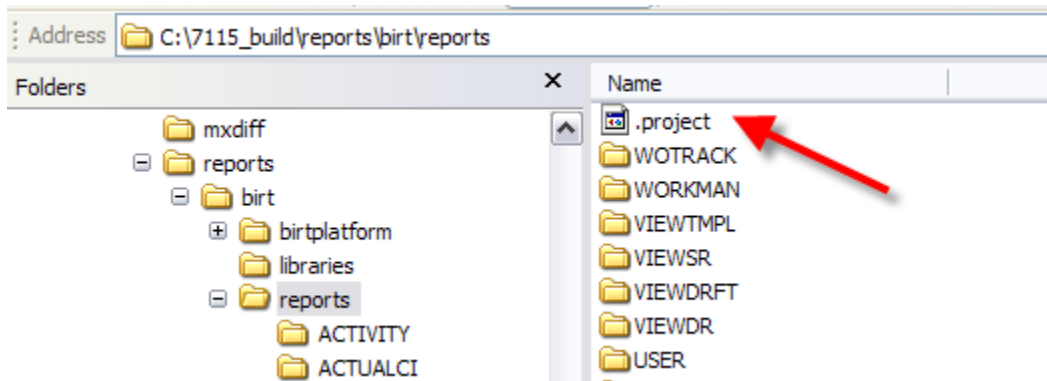
4. To confirm that the reports imported, expand a folder and then double click on an rptdesign file to open it. In the screenshot below, the ASSET folder was expanded, and the asset.rptdesign file selected.



5. Finally, you can confirm that the correct project is imported. To do this, right click on the Project. *NOTE: The location should be your V7 Report Source. It should not be under an Eclipse directory.



Also, a .project file will be created under your <V7115>\reports\birt\reports directory.



5. Common Configuration and Install Issues:

If you run into issues configuring the BIRT Designer, please check the following to confirm the configuration/install settings.

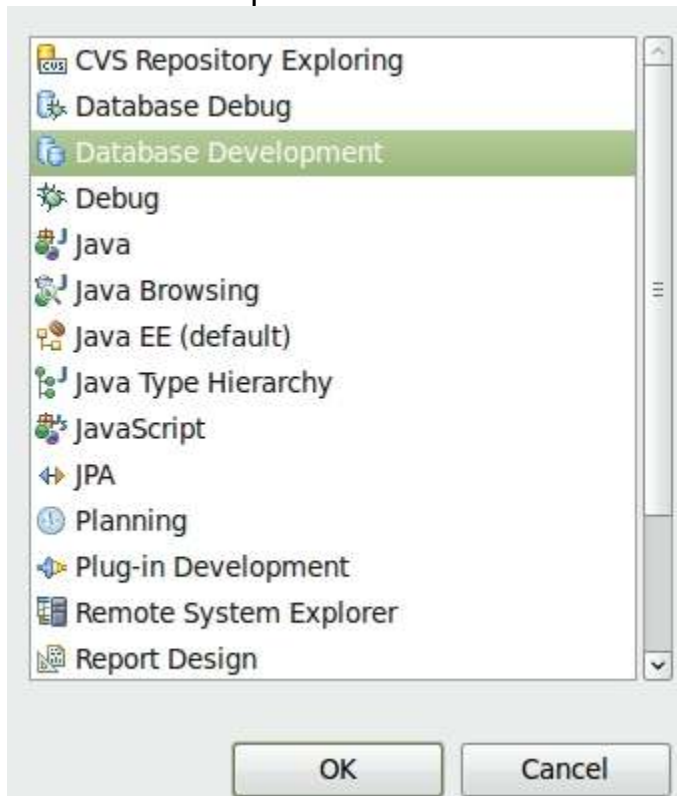
1. A supported JDK (1.5 or 1.6) is installed.
2. The BIRT Designer 'All In One' Package was used
3. The supported versions of Eclipse 3.4.2 and BIRT 2.3.2 were installed.



Provider	Feature Name	Version	Feature Id
Eclipse.org	Apache Commons Codec Plug-in	1.3.0.v20070920	org.apache.commons.codec
Eclipse.org	Apache Derby Core Plug-in for I	10.3.1.4	org.apache.derby.core
Eclipse.org	BIRT Advanced XML Editor Plug	2.3.2.r232_v2009	org.eclipse.birt.report.designer.edi
Eclipse.org	BIRT Chart Context-sensitive H	2.3.2.r232_v2008	org.eclipse.birt.chart.cshelp
Eclipse.org	BIRT Chart Framework	2.3.2.r232_v2008	org.eclipse.birt.chart
Eclipse.org	BIRT Chart Runtime	2.3.2.r232_v2008	org.eclipse.birt.chart.runtime
Eclipse.org	BIRT Context-sensitive Help	2.3.2.r232_v2008	org.eclipse.birt.cshelp
Eclipse.org	BIRT Documentation	2.3.2.r232_v2008	org.eclipse.birt.doc
Eclipse.org	BIRT Example	2.3.2.r232_v2008	org.eclipse.birt.example
Eclipse.org	BIRT Report Designer	2.3.2.r232_v2008	org.eclipse.birt.report.designer
Eclipse.org	BIRT Report Runtime	2.3.2.r232_v2008	org.eclipse.birt.report.runtime
Eclipse.org	Business Intelligence and Repo	2.3.2.r232_v2008	org.eclipse.birt
Eclipse.org	Data Tools Platform Connectivi	1.6.2.v200810071	org.eclipse.datatools.connectivity

4. Both steps 2E and 2F on page 5 were performed.
 - a. For 2F, make sure that you extracted the Database Jar Files to the directory. If the jar files are copied only, errors will result.

5. Confirm that the mxreportdatasources.properties file was configured for your unique environment.
 - a. To help confirm this, check if you can connect to the configured database using Eclipse's Data Tools Connections.
 - b. To do this, from the Menu, select Window - Open Perspective - Other and the window below will display. Select Database Development.



- c. Then go thru the steps of adding a new connection profile and testing Database Connectivity from the BIRT Designer.

Revision History

May 2011 - Updated url and screenshot of BIRT Designer URL. Previous url redirected to this site.

October 2010. Updates include (1) added schema name in mxreportdatasources.properties file on page 4

September 2010. Updates include (1) Corrected property file naming on page 3 (2) Added reference information on setting up report developer database access on page 4

Notices

This information was developed for products and services offered in the U.S.A.

IBM may not offer the products, services, or features discussed in this document in other countries. Consult your local IBM representative for information on the products and services currently available in your area. Any reference to an IBM product, program, or service is not intended to state or imply that only that IBM product, program, or service may be used. Any functionally equivalent product, program, or service that does not infringe any IBM intellectual property right may be used instead. However, it is the user's responsibility to evaluate and verify the operation of any non-IBM product, program, or service.

IBM may have patents or pending patent applications covering subject matter described in this document. The furnishing of this document does not grant you any license to these patents. You can send license inquiries, in writing, to:

*IBM Director of Licensing
IBM Corporation
North Castle Drive
Armonk, NY 10504-1785
U.S.A.*

The following paragraph does not apply to the United Kingdom or any other country where such provisions are inconsistent with local law: INTERNATIONAL BUSINESS MACHINES CORPORATION PROVIDES THIS PUBLICATION "AS IS" WITHOUT WARRANTY OF ANY KIND, EITHER EXPRESS OR IMPLIED, INCLUDING, BUT NOT LIMITED TO, THE IMPLIED WARRANTIES OF NON-INFRINGEMENT, MERCHANTABILITY OR FITNESS FOR A PARTICULAR PURPOSE. Some states do not allow disclaimer of express or implied warranties in certain transactions, therefore, this statement may not apply to you.

This information could include technical inaccuracies or typographical errors. Changes are periodically made to the information herein; these changes will be incorporated in new editions of the publication. IBM may make improvements and/or changes in the product(s) and/or the program(s) described in this publication at any time without notice.

Any references in this information to non-IBM Web sites are provided for convenience only and do not in any manner serve as an endorsement of those Web sites. The materials at those Web sites are not part of the materials for this IBM product and use of those Web sites is at your own risk.

IBM may use or distribute any of the information you supply in any way it believes appropriate without incurring any obligation to you.

Information concerning non-IBM products was obtained from the suppliers of those products, their published announcements or other publicly available sources. IBM has not tested those products and cannot confirm the accuracy of performance, compatibility or any

other claims related to non-IBM products. Questions on the capabilities of non-IBM products should be addressed to the suppliers of those products.

This information contains examples of data and reports used in daily business operations. To illustrate them as completely as possible, the examples include the names of individuals, companies, brands, and products. All of these names are fictitious and any similarity to the names and addresses used by an actual business enterprise is entirely coincidental.

Trademarks

IBM, the IBM logo, and ibm.com are trademarks or registered trademarks of International Business Machines Corp., registered in many jurisdictions worldwide. Other product and service names might be trademarks of IBM or other companies. A current list of IBM trademarks is available on the Web at “[Copyright and trademark information](http://www.ibm.com/legal/copytrade.shtml)” at www.ibm.com/legal/copytrade.shtml.

Microsoft, Windows, Windows NT, and the Windows logo are trademarks of Microsoft Corporation in the United States, other countries, or both